

THE
**GOLDEN
 GRAVES**
 OF ANCIENT VANI



1. *Necklace with Turtle Pendants*
 Colchian, about 450 B.C.
 Gold
 Pendants: H: 3 cm (1 3/16 in.); Chain: L: 66 cm (26 in.)
 Georgian National Museum, Tbilisi, Georgia, 10-975:56
 Photo: Amiran Kiladze
 VEX.2009.4.59



2. *Pair of Bracelets with Boars*
 Possibly Achaemenid, from ancient Persia, about 450 B.C.
 Gold
 Bracelet A (approx): Diam: 7.8 cm (3 1/16 in.)
 Bracelet B (approx): Diam: 7.6 cm (3 in.)
 Georgian National Museum, Tbilisi, Georgia, 10-975:61a-b
 Photo: Amiran Kiladze
 VEX.2009.4.68



3. *Pair of Ornaments with Horsemen*
 Colchian, 400–350 B.C.
 Gold
 Ornament A (approx.): H: 8.2 x L (chariot): 2.4 cm (3 1/4 x 15/16 in.)
 Ornament B (approx): H: 7.9 x L (chariot): 2.2 cm (3 1/8 x 7/8 in.)
 Georgian National Museum, Tbilisi, Georgia, 11-974:2a-b
 Photo: Amiran Kiladze
 VEX.2009.4.76



4. *Pectoral with Griffins and Birds*
 Achaemenid, from ancient Persia, and Colchian, 400–350 B.C.
 Gold, glass, carnelian and turquoise
 Greatest extent: H: 31 cm (12 3/16 in.)
 Georgian National Museum, Tbilisi, Georgia, 11-974:13
 Photo: Rob Harrell, Freer Gallery of Art and Arthur M. Sackler
 Gallery, Smithsonian Institution
 VEX.2009.4.81





5. *Headdress Ornament with Animals and Birds*
Colchian, 350–300 B.C.
Gold
Greatest extent: H: 6.6 x W: 6.5 x D: 2.7 cm (2 5/8 x 2 9/16 x 1 1/16 in.)
Georgian National Museum, Tbilisi, Georgia, 1-2005/1
Photo: Amiran Kiladze
VEX.2009.4.106



6. *Eros figurine from Lamp with Erotes (pre-conservation)*
Possibly Greek, from Asia Minor, 250–100 B.C.
Bronze, iron
L: 24.8 x W: 15 cm (9 3/4 x 5 7/8 in.)
Georgian National Museum, Tbilisi, Georgia, 07:1-07/327.1
VEX.2009.4.145.b



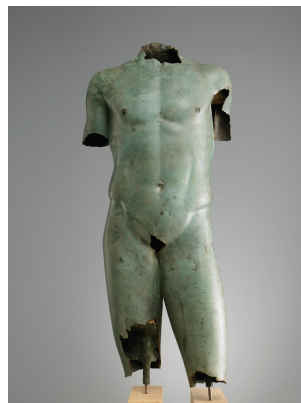
7. *Lamp with Zeus and Ganymede (pre-conservation)*
Possibly Greek, from Asia Minor, 250–100 B.C.
Bronze, iron
W: 31 x D: 15 x L: 33 cm (12 3/16 x 5 7/8 x 13 in.)
Georgian National Museum, Tbilisi, Georgia, 07:1-07/326
VEX.2009.4.146



8. *Figurine with Jewelry*
Colchian, made in Vani, 300–200 B.C.
Bronze, gold
H: 25 x W (arms): 8.4 cm (9 13/16 x 3 5/16 in.)
Georgian National Museum, Tbilisi, Georgia, 1-2007/1
VEX.2009.4.133
Photo: Amiran Kiladze



9. *Appliqué of Pan*
Greek, from Asia Minor, 150–100 B.C.
Bronze
H: 13 x W: 9.8 x D: 6 cm (5 1/8 x 3 7/8 x 2 3/8 in.)
Georgian National Museum, Tbilisi, Georgia, 10-975/186
Photo: Rob Harrell, Freer Gallery of Art and Arthur M. Sackler Gallery, Smithsonian Institution
VEX.2009.4.38



10. *Torso of a Youth*
Colchian, made in Vani, 200–100 B.C.
Bronze
H: 105 x W: 45 x D: 25 cm (41 5/16 x 17 11/16 x 9 13/16 in.)
Georgian National Museum, Tbilisi, Georgia, 2:996-43
Photo: Rob Harrell, Freer Gallery of Art and Arthur M. Sackler Gallery, Smithsonian Institution
VEX.2009.4.50